

Regulator housing

To suit RPM series regulators



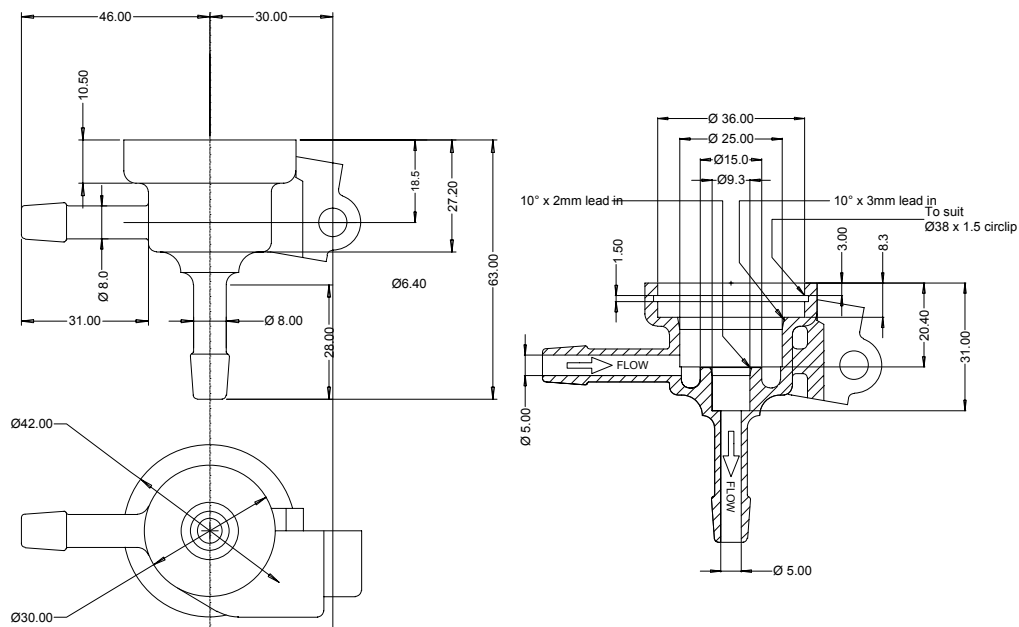
Description

This standard housing enables any of the RPM family of fuel pressure regulators to be installed remotely from the engine fuel rail.

Installation may be at any position along the fuel 'return' line.



Dimensions



Technical Data

Inlet hole Ø 8 mm
 Outlet hole.....Ø 8 mm

Material..... Die cast aluminium
 Mounting holeØ 6.4 mm

Ordering information

Part No.	Description	Order code
CS038	Universal housing for RPM fuel pressure regulator	23820710200
CS037	Retaining circlip	23820710100

MM Competition Systems Ltd Hyjuniper, Long Lane Shaw, Berkshire, RG14 2TA England	For further details please contact
	Tel: +44 (0)8707 444666 Fax: +44 (0)8707 444888 www.mmcompsys.com mail@mmcompsys.com