

S107M

High flow fuel injector 'up to 996cc/min'
Short body length 'Pico style'



Description

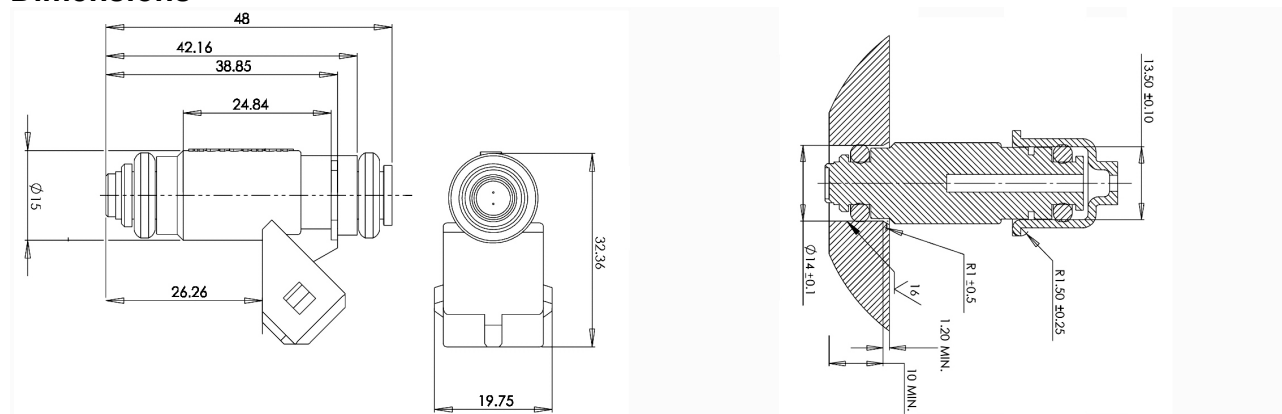
This is the ultimate in compact fuel injectors. Its small size and high flow rate makes it the perfect choice for turbo or other high BHP applications where the original Weber Marelli Pico injectors are not able to achieve sufficient flow. This 'high-impedance' injector may be used at pressures from 2.5 up to 7.5bar making them compatible with most ECUs.

The injector has a 30° inclusive spray pattern which is achieved via a 4 hole pattern for improved atomisation and engine performance

The electrical connection to the control unit is via a 2 way Mini-Timer plastic plug.



Dimensions



Technical Data

Performance - Typical

Dead time @ 12v 1.0 ms
Max. fuel pressure allowed 7.5 bar
Maximum duty cycle 90 %
Operating temperature range -30...110 °C
Vibration (peak) 30 g
Pulse width control <2.0 ms

Flow data

3.0bar 668 cc/min
4.0bar 760 cc/min
5.0bar 846 cc/min
6.0bar 938 cc/min

7.5bar 996 cc/min

Mechanical Characteristics

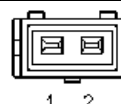
Height 48.0 mm
Outside diameter (connector excluded) .. 15.0 mm
Weight 40 g

Electrical Characteristics

Connector Mini-Timer 2 way
Power supply 8 ÷ 16 Vdc
Resistance 12.5 Ω
Driver type ON-OFF

Electrical connections

PIN	Description
1	GND
2	+12 V



Ordering information

Part No	Description	Colour band	Order code
S107M	High flow fuel injector	N/a	212000011

MM Competition Systems Ltd Hyjuniper, Long Lane Shaw, Berkshire, RG14 2TA England		For further details please contact	Tel: +44 (0)8707 444666 Fax: +44 (0)8707 444888 www.mmcompsys.com mail@mmcompsys.com
---	--	------------------------------------	---