

L107M

High flow fuel injector 'up to 996cc/min'
Long body length



Description

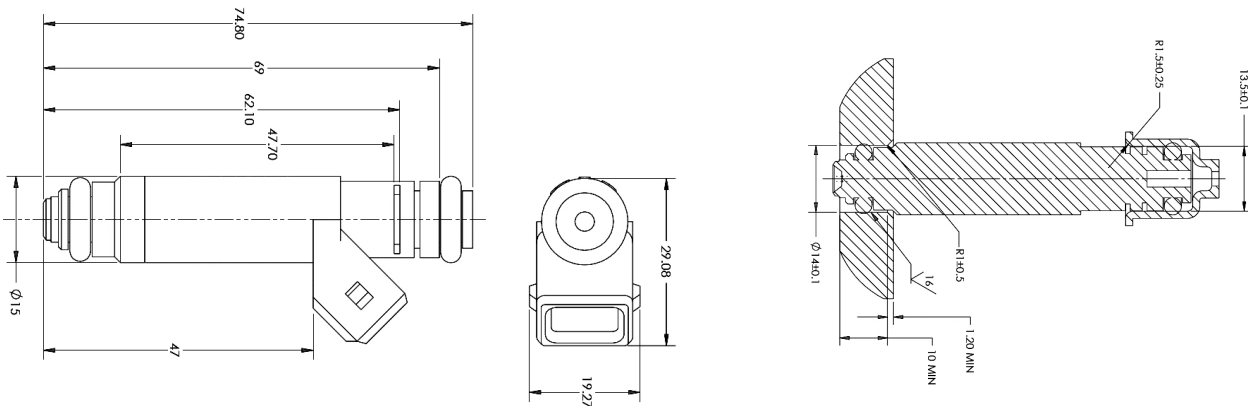
This is the ultimate in compact fuel injectors. Its small size and high flow rate makes it the perfect choice for turbo or other high BHP applications. This 'high-impedance' injector may be used at pressures from 2.5 up to 7.5bar making them compatible with most ECUs.

The injector has a 30° inclusive spray pattern which is achieved via a 4 hole pattern for improved atomisation and engine performance

The electrical connection to the control unit is via a 2 way Mini-Timer plastic plug.



Dimensions



Technical Data

Performance - Typical

Dead time @ 12v	1.0	ms
Max. fuel pressure allowed.....	7.5	bar
Maximum duty cycle	90	%
Operating temperature range	-30...110	°C
Vibration (peak)	30	g
Pulse width control.....	<2.0	ms

Flow data

3.0bar.....	668	cc/min
4.0bar.....	760	cc/min
5.0bar.....	846	cc/min
6.0bar.....	938	cc/min
7.5bar.....	996	cc/min

Mechanical Characteristics

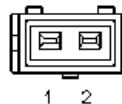
Height.....	74.8	mm
Outside diameter (connector excluded) ..	15.0	mm
Weight.....	40	g

Electrical Characteristics

Connector.....	Mini-Timer 2 way
Power supply	8 ÷ 16 Vdc
Resistance.....	12.5 Ω
Driver type	ON-OFF

Electrical connections

PIN	Description
1	GND
2	+12 V



Ordering information

Part No	Description	Colour band	Order code
L107M	High flow fuel injector	N/a	212000021

For further details please contact

MM Competition Systems Ltd
Hyjuniper, Long Lane
Shaw, Berkshire,
RG14 2TA
England

Tel: +44 (0)8707 444666
Fax: +44 (0)8707 444888
www.mmcompsys.com
mail@mmcompsys.com